

# 2018 Annual Report



SCMH sponsors Mental Health Awareness Day, May 10<sup>th</sup>, 2018



## OUR ROLES

### Treatment Providers

Comprehensive range of treatment services to people with concerns related to their emotional and mental health

### Educators

Parenting Classes; Suicide Intervention and Skills Training; Mental Health First Aid; Psychological Care for the Elderly; Divorce; Trauma; Coping with Grief; Smoking Cessation

### Community Support

Courts, Schools, Law Enforcement, Health Care Providers, Foster Care agencies, Community Organizations, Businesses

### Prevention

Prenatal Education for parents; Early Childhood Developmental Screens; Early substance use detection Screens; Universal Mental Health Screenings, Mental Health Awareness

**Our Mission:** To provide quality mental health services that empowers individuals, families, and communities to shape promising futures.

**Our Vision:** Exceptional care and engagement that results in a meaningful difference

## Progress Updates at a Glance

- 3,799 persons served in our clinics
- 317 parents received parenting training in over 70 classes held
- 63 community members received Applied Suicide Intervention Skills Training
- 44 community members trained in Mental Health First Aid
- 33 on-going groups provided in area public schools
- Y-Link-youth leadership program developed
- Youth Drop-in center opened
- Implemented utilization of Peer Support Workers for Severe and Emotionally Disturbed Children
- School Truancy Program started
- Tele-med implemented



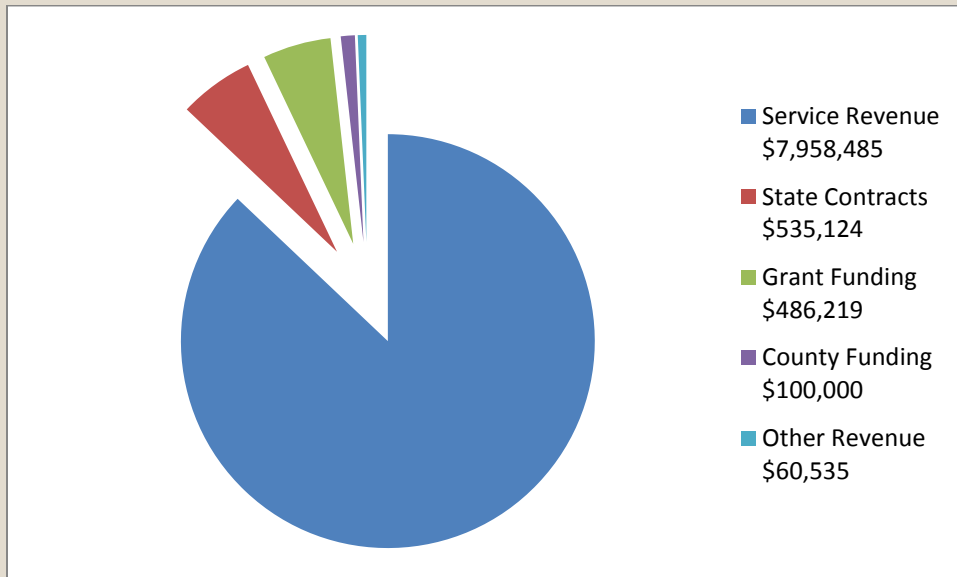
## Strategic Priorities

- Increase our presence in the public schools and smaller communities of Butler County
- Improve access to care by providing therapy and medication management services at more locations throughout the County
- Improve integrated health care and partnership with physicians and local hospitals
- Expansion of substance addiction services
- Expansion of free screening services in the community
- Increase community education regarding behavioral health issues

# Financials

## Revenue, Gains and Other Supports

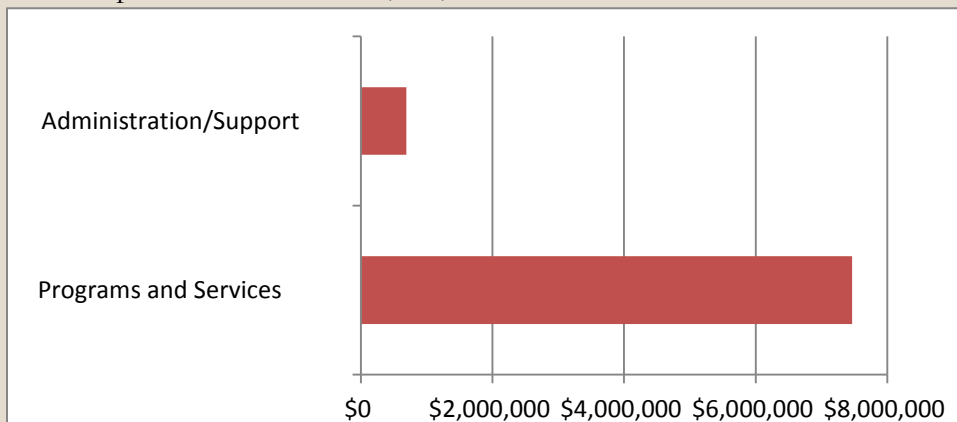
Service Revenue	\$7,958,485
State Contracts	\$535,124
County Funding	\$100,000
Grant Funding	\$486,219
Other Revenue	\$60,535
Total Revenue	\$9,140,363*



\*Year End, Unaudited

## Expenses

Programs and Services	\$7,465,734
Administration/Support	\$690,685
Total Expenses	\$8,156,419*



\*Year End, Unaudited

## By The Numbers

Charitable Care: \$825,000 written off for persons without the means to pay

Average cost per visit for persons without insurance: \$10.35

Total amount of expenses for direct client care: 92.5%

Total number of services provided: 104,644

Total number of crisis services provided: 1,102

Treatment time increased by 5,265 hours (6%) over the previous year

Number of children served in our clinics: 1425 (37.5%)

## Summary

With the assistance of grant funding, we were able to expand our educational and prevention services to the various communities of Butler County. Most of these activities were targeted towards children as well as to parents and to schools. However, we continued our strong support for adults with severe mental illnesses by providing extensive services free of charge to 40% of this population that did not have insurance for their care. We attained 10.7% revenue over expenses in 2018 which allowed us to provide \$825,000 worth of charitable care as well as attend to some much needed infrastructure issues. We are proud to report that 92.5% of our expenses were for direct client care.

Going into 2019, we are committed to improving access to care by providing more services in settings outside of our clinics. The added convenience for our clients and community partners will result in quicker care and improved communication and integration of care. Services will be more accessible in our schools; physician offices; and the smaller rural communities of Butler County. Tele-med services will continue to be offered. Likewise, we will continue to educate all of our communities about mental illnesses; early intervention/prevention; and the importance of maintaining good mental health.

# Leadership Teams

## Management Team

Dan Rice, Executive Director

Amanda Parsons, Financial  
Manager

Trever Krehbiel, Medical Director

Iris Pauly, Clinical Director

Ammie Mboule, Community  
Support Services Director

Trisha Smith, Operations Director

Tim Hein, Community Based  
Services Director

Branden Davis-Butler, Front  
Office Business Director

## Board Members

Ann Carpenter, President

Charles Hart, Vice-President

Cathy Johnson, Treasurer

Darrell Whitney

Don Roberson

Linda Baines

Amanda Danninger

Teren Allen